



Self-reclosing overcurrent and Earth leakage protection

Table: Selection of self-reclosing earth leakage and circuit breaker protection units

Protection	Reclosing	Solutions	Units
Earth leakage	Earth leakage	Self-reclosing RCCB	REC4 / REC3C
		Programmable earth leakage relay + external transformer + contactor	RGU-10 RAL + WGC CBS-4 RAL + WGC
		Programmable earth leakage relay with built-in transformer + contactor	WRU RAL
Earth leakage and circuit breaker	Earth leakage	Earth leakage relay with built-in transformer + Motorized circuit breaker	WRU-10k + MCB.P
	Earth leakage and circuit breaker	Programmable earth leakage relay with circuit breaker + external transformer	RECmax-LDP + WGC 25/30/35
		Programmable earth leakage relay with circuit breaker + MEASURE + external transformer	RECmax-CVM + WGC 20/30-SC + MC1
		Programmable earth leakage relay + external transformer + motorized circuit breaker	RGU-10 MT + WGC + RECmac MP + MT-FDE ($I_n > 63$ A)
		Earth leakage relay with built-in transformer + motorized circuit breaker	WRU-10 MT + RECmax MP
		Compact unit, ready to be installed	WRGU-10 MTT
Circuit breaker	Circuit breaker	Self-reclosing circuit breaker	RECmax P
		Programmable reclosing relay + motorized switch	RRM + MT/RECmax MP (consult)

WGC, Earth leakage transformer


Type	Code	Usefull diam.(mm)	IΔn (A)	Cable (m)	weight (kg)
WGC-20-SC	[*] P10181.	20	acc. relay	0,5	0,08
WGC-30-SC	[*] P10182.	30	acc. relay	0,5	0,10
WGS-20	[*] P10131.	20	acc. relay	-	0,06
WGS-30	[*] P10132.	30	acc. relay	-	0,07
WGC-25	[*] P10151.	25	acc. relay	-	0,08
WGC-35	[*] P10152.	35	acc. relay	-	0,11
WGC-55	[*] P10153.	55	acc. relay	-	0,17
WGC-80	[*] P10154.	80	acc. relay	-	0,29
WGC-110	[*] P10155.	115	acc. relay	-	0,41
WGC-140	[*] P10156.	140	acc. relay	-	0,68
WGC-180	[*] P10157.	180	acc. relay	-	0,91
WGC-220x105	[*] P10158.	220 x 105	acc. relay	-	3,90
WGC-350x150	[*] P10159.	350 x 150	acc. relay	-	6,80
WGC-500x200	[*] P10160.	500 x 200	acc. relay	-	11,00

UL certification for all WGC and WGS models, on demand

Type	Code	Description
PA-TC/WG	[*] P19921.	DIN rail mounting accessory for WGC-25, WGC-35 and WGC-55

TP-WGC, Split-core earth leakage transformers/core balanced


Type	Code	Usefull diam.(mm)	IΔn (A)	IΔn min.(A)	weight (kg)
TP58 WGC	[C] P11121.	80 x 50	acc. relay > 0,3A	0,3	0,80
TP88 WGC	[C] P11131.	80 x 80	acc. relay > 0,3A	0,3	1,05
TP812 WGC	[C] P11141.	120 x 80	acc. relay > 0,3A	0,3	1,06
TP816 WGC	[C] P11151.	160 x 80	acc. relay > 0,3A	0,3	2,45

Only for RGU-2, RGU-10/10C, CBS-4/4C

Delivery time: [*] immediate
[x] working weeks
[c] consult

EARTH LEAKAGE PROTECTION AND SELF-RECLOSING

REC4, RCCB with self-reclosing system, type A



Type	Code	In (A)	Poles	Sensitivity	Reclosing mode
REC4-2P-40-30M	[*] P26A21.	40 A	2	30 mA	Insulation

3 reconnections: 3, 20, 180 s. Complies with the EN 50557 Standard



REC3, RCCB with self-reclosing system, type A

Type	Code	In (A)	Poles	Sensitivity	Reclosing mode
REC3-2P-40-30M	[*] P26121.	40 A	2	30 mA	Insulation
REC3-2P-63-30M	[*] P26131.	63 A	2	30 mA	Insulation
REC3-2P-40-300T	[*] P26123.	40 A	2	300 mA	Time
REC3-2P-63-300T	[*] P26133.	63 A	2	300 mA	Time
REC3-4P-40-30M	[*] P26221.	40 A	4	30 mA	Insulation
REC3-4P-63-30M	[*] P26231.	63 A	4	30 mA	Insulation
REC3-4P-40-300T	[*] P26223.	40 A	4	300 mA	Time
REC3-4P-63-300T	[*] P26233.	63 A	4	300 mA	Time

RCCB with self-reclosing system and output contact

REC3C 2P-40-30M	[*] P26811.	40 A	2	30 mA	Insulation
REC3C 2P-63-30M	[*] P26814.	63 A	2	30 mA	Insulation
REC3C 2P-40-300T	[*] P26721.	40 A	2	300 mA	Time
REC3C 2P-63-300T	[*] P26724.	63 A	2	300 mA	Time
REC3C 4P-40-30M	[*] P26812.	40 A	4	30 mA	Insulation
REC3C 4P-63-30M	[*] P26815.	63 A	4	30 mA	Insulation
REC3C 4P-40-300T	[*] P26722.	40 A	4	300 mA	Time
REC3C 4P-63-300T	[*] P26725.	63 A	4	300 mA	Time

3 reconnections: 3, 20, 180 s. Complies with the EN 50557 Standard

Programmable earth leakage relays, used with an external earth leakage transformer and contactor

Complete set formed by: Earth leakage relay + Contactor (*1)+ WGC transformer (*1)

RGU-10 RAL, Reclosing protection relays and earth leakage reclosing with WGC external transformer



Type A ultra-immunised earth leakage relay, programmable, 3 modules with display and locking status release by reclosing. 230 Vac auxiliary power supply.

Type	Code	I Δ n (A)	Breaking element	Delay	Communications	Nr. reclosures
RGU-10 RAL	[*] P24622.	0,03 ... 30 A	Contactor	0,02...10 s, INS, SEL	-	Programmable
RGU-10C RAL	[*] P24662.	0,03 ... 30 A	Contactor	0,02...10 s, INS, SEL	RS-485	Programmable

The delay is cancelled in all relays with a sensitivity adjustment of 0.03 A, IEC 60947-2, annex M.

INS, SEL trip curves, according to IEC 61008-1, for trigger coils with a trip time <0.02 s

Requires an earth leakage transformer, WGC type and contactor (not included). To encode other parameters, see the table at the end of the section

CBS4-RA, Central protection and earth leakage reclosing with WGC external transformer



Station with 4 Type A ultra-immunised earth leakage relays, programmable, 4 modules with display and locking status release by reclosing. 230 Vac Auxiliary power supply

Type	Code	I Δ n (A)	N° relays	Delay	Communications	Nr. reclosures
CBS-4 RA	[*] P24911.	0,03 ... 30 A	4	0,02 ... 10 INS, SEL	-	Programmable
CBS-4C-RA	[*] P24912.	0,03 ... 30 A	4	0,02 ... 10 INS, SEL	RS-485	Programmable

The delay is cancelled in all relays with a sensitivity adjustment of 0.03 A, IEC 60947-2, annex M

INS, SEL trip curves, according to IEC 61008-1, for trigger coils with a trip time <0.02 s

Requires an earth leakage transformer, WGC type and contactor (not included). To encode other parameters, see the table at the end of the section

Programmable earth leakage relays with built-in transformer, used with a contactor

Complete set formed by: Earth leakage relay + Contactor (*1)

WRU-10RAL, Protection relays and earth leakage reclosing, Type A ultra-immunised with built-in transformer



Programmable earth leakage relay, 3 modules, display with prealarm output and reclosing locking system. 230 Vac Auxiliary power supply

Type	Code	Usefull diam.(mm)	I Δ n (A)	Delay	Nr. reclosures	Time between reclosures
WRU-10-RAL	[*] P24453.	28	0,03 ... 3 A 0,03 ... 30 A	0,02...10 s, INS, SEL	Programmable	Programmable

STREET LIGHTING WITH SIGN POSTING, contactor circuit breaker

WRU-10-RAL0,3-1	[*] P24457.	28	0,3 ... 1 A	0,02 INS	Programmable	Programmable
-----------------	-------------	----	-------------	----------	--------------	--------------

The delay is cancelled in all relays with a 0.03 A sensitivity adjustment, according to IEC 60947-2, annex M. INS, SEL trip curves, according to IEC 61008-1, for trigger coils with a tripping time \leq 0.02 s
The contactor is not supplied. To encode other parameters, see the table at the end of the section

(*1) Not included in the reference

**OVERCURRENT AND EARTH LEAKAGE PROTECTION, EARTH LEAKAGE SELF-RECLOSING****Programmable earth leakage relays with built-in transformer and motorized circuit breaker**

Complete set formed by: Earth leakage relay K Series + MCB circuit breaker (*1)

**WRU-10k, Earth leakage relay with built-in transformer**

Type A ultra-immunised earth leakage relay that can be programmed in 3 modules, display to operate with an MCB.P circuit breaker. 230 Vac

Type	Code	Usefull diam.(mm)	IΔn (A)	Delay	Nr. reclosures	Time between reclosures
WRU-10K-0,03-3A	[C] P23261.	28	0,03 ... 3 A	0,02 ... 1 s	30	20 s, 40 s then every 5 min
WRU-10K	[C] P23262.	28	0,03 A	INS	15	20 s, 40 s then every 3 min

Certified and Approved by Telefónica The delay is cancelled in all relays with a sensitivity adjustment of 0.03 A, IEC 60947-2 annex M. Requires a motorised circuit breaker, MCB.P type (not included)

**MCB, Motorized circuit breakers for overcurrent and earth leakage protection with reclosing by differential relay**

Type	Code	In (A)	Poles	Type	Code	In (A)	Poles
2 Poles, C Curve				4 Poles, C Curve			
MCB.P C-2p-6A	[*] P20210.	6 A	2	MCB.P C-3p+N-10A	[*] P20221.	10 A	4
MCB.P C-2p-10A	[*] P20211.	10 A	2	MCB.P C-3p+N-16A	[*] P20223.	16 A	4
MCB.P C-2p-16A	[*] P20213.	16 A	2	MCB.P C-3p+N-20A	[*] P20224.	20 A	4
MCB.P C-2p-20A	[*] P20214.	20 A	2	MCB.P C-3p+N-25A	[*] P20225.	25 A	4
MCB.P C-2p-25A	[*] P20215.	25 A	2	MCB.P C-3p+N-32A	[*] P20226.	32 A	4
MCB.P C-2p-32A	[*] P20216.	32 A	2	MCB.P C-3p+N-40A	[*] P20227.	40 A	4
MCB.P C-2p-40A	[*] P20217.	40 A	2	MCB.P C-3p+N-50A	[*] P20228.	50 A	4
MCB.P C-2p-50A	[*] P20218.	50 A	2	MCB.P C-3p+N-63A	[*] P20229.	63 A	4
MCB.P C-2p-63A	[*] P20219.	63 A	2	Aux_contact.-MCB/P/T	[*] P29001.	-	-

Only for operation with WRU-10K

C curve circuit breaker with a 6 kA cut off power (IEC 60898); optional D curve (up to 32 A), for an additional charge of 10%

OVERCURRENT AND EARTH LEAKAGE PROTECTION AND RECLOSING**Programmable earth leakage relays with circuit breaker and external transformer**

Set composed of: Earth leakage relay with built-in circuit breaker + WGC-SC Transformer + MC Measurement transformer

**RECmax-CVM, Self-reclosing earth leakage relay with power analyzer functions, transformers included**

Type	Code	In (A)	Poles	Type	Code	In (A)	Poles
2 Poles, C Curve				2 Poles, D Curve			
RECmax-CVM 2P C2-10	[2] P2B111.	10	2	RECmax-CVM 2P D2-10	[2] P2B131.	10	2
RECmax-CVM 2P C2-16	[2] P2B112.	16	2	RECmax-CVM 2P D2-16	[2] P2B132.	16	2
RECmax-CVM 2P C2-20	[2] P2B113.	20	2	RECmax-CVM 2P D2-20	[2] P2B133.	20	2
RECmax-CVM 2P C2-25	[2] P2B114.	25	2	RECmax-CVM 2P D2-25	[2] P2B134.	25	2
RECmax-CVM 2P C2-32	[2] P2B115.	32	2	RECmax-CVM 2P D2-32	[2] P2B135.	32	2
RECmax-CVM 2P C2-40	[2] P2B116.	40	2	RECmax-CVM 2P D2-40	[2] P2B136.	40	2
RECmax-CVM 2P C2-50	[2] P2B117.	50	2	RECmax-CVM 2P D2-50	[2] P2B137.	50	2
RECmax-CVM 2P C2-63	[2] P2B118.	63	2	RECmax-CVM 2P D2-63	[2] P2B138.	63	2
4 Poles, C Curve				4 Poles, D Curve			
RECmax-CVM 4P C4-10	[2] P2B121.	10	4	RECmax-CVM 4P D4-10	[2] P2B141.	10	4
RECmax-CVM 4P C4-16	[2] P2B122.	16	4	RECmax-CVM 4P D4-16	[2] P2B142.	16	4
RECmax-CVM 4P C4-20	[2] P2B123.	20	4	RECmax-CVM 4P D4-20	[2] P2B143.	20	4
RECmax-CVM 4P C4-25	[2] P2B124.	25	4	RECmax-CVM 4P D4-25	[2] P2B144.	25	4
RECmax-CVM 4P C4-32	[2] P2B125.	32	4	RECmax-CVM 4P D4-32	[2] P2B145.	32	4
RECmax-CVM 4P C4-40	[2] P2B126.	40	4	RECmax-CVM 4P D4-40	[2] P2B146.	40	4
RECmax-CVM 4P C4-50	[2] P2B127.	50	4	RECmax-CVM 4P D4-50	[2] P2B147.	50	4
RECmax-CVM 4P C4-63	[2] P2B128.	63	4	RECmax-CVM 4P D4-63	[2] P2B148.	63	4

All models feature the WGC20/30-SC earth leakage transformer and MC-3 or MC-1 measuring transformer with connected terminal

Earth leakage relay with adjustable sensitivity (0.03 A, up to 1 A), adjustable delay (with curve, INS/SEL, or by time, from 0.1 to 1 s) and programmable automatic reclosing system

The 0.03 A sensitivity adjustment cancels the delay for a specific period of time, IEC 60947-2, annex M
C/D curve circuit breaker with 6 kA cut off power (IEC 60898). Please contact us for other specifications.

(*1) Not included in the reference

Delivery time: [*] immediate
[x] working weeks
[c] consult

**Programmable earth leakage relay with built-in transformer + motorized circuit breaker**

Complete set formed by: Earth leakage relay + RECmax MP / MT (*1)

**WRU-10MT, Earth leakage relay with built-in transformer**

Type	Code	Usefull diam.(mm)	IΔn (A)	Delay	Nr. reclosures	Time between reclosures
WRU-10-MT	[C] P24275.	28	0,03 ... 3 A 0,03 ... 30 A	0,02...10 s, INS, SEL (*1)	Programmable	Programmable

The delay is cancelled in all relays with a sensitivity adjustment of 0.03 A, IEC 60947-2, annex M. (*1)) INS, SEL trip curves, according to IEC 61008-1, for trigger coils with a trip time ≤ 0.02 s
Requires a WGS/WGC earth leakage transformer (not included). To operate with RECmax MP (In≤63 A), with MT-FDE (In>63 A), To encode other parameters, see the table at the end of the section

**RECmaxMP, Motorized circuit breakers (up to 63 A)**

Type	Code	In (A)	Poles	Type	Code	In (A)	Poles
2 Poles, C Curve				2 Poles, D Curve			
RECmax MP-C2-6	[1] P27110.	6 A	2	RECmax MP-D2-6	[1] P27130.	6 A	2
RECmax MP-C2-10	[1] P27111.	10 A	2	RECmax MP-D2-10	[1] P27131.	10 A	2
RECmax MP-C2-16	[1] P27112.	16 A	2	RECmax MP-D2-16	[1] P27132.	16 A	2
RECmax MP-C2-20	[1] P27113.	20 A	2	RECmax MP-D2-20	[1] P27133.	20 A	2
RECmax MP-C2-25	[1] P27114.	25 A	2	RECmax MP-D2-25	[1] P27134.	25 A	2
RECmax MP-C2-32	[1] P27115.	32 A	2	RECmax MP-D2-32	[1] P27135.	32 A	2
RECmax MP-C2-40	[1] P27116.	40 A	2	RECmax MP-D2-40	[1] P27136.	40 A	2
RECmax MP-C2-50	[1] P27117.	50 A	2	RECmax MP-D2-50	[1] P27137.	50 A	2
RECmax MP-C2-63	[1] P27118.	63 A	2	RECmax MP-D2-63	[1] P27138.	63 A	2
4 Poles, C Curve				4 Poles, D Curve			
RECmax MP-C4-6	[1] P27120.	6 A	4	RECmax MP-D4-6	[1] P27140.	6 A	4
RECmax MP-C4-10	[1] P27121.	10 A	4	RECmax MP-D4-10	[1] P27141.	10 A	4
RECmax MP-C4-16	[1] P27122.	16 A	4	RECmax MP-D4-16	[1] P27142.	16 A	4
RECmax MP-C4-20	[1] P27123.	20 A	4	RECmax MP-D4-20	[1] P27143.	20 A	4
RECmax MP-C4-25	[1] P27124.	25 A	4	RECmax MP-D4-25	[1] P27144.	25 A	4
RECmax MP-C4-32	[1] P27125.	32 A	4	RECmax MP-D4-32	[1] P27145.	32 A	4
RECmax MP-C4-40	[1] P27126.	40 A	4	RECmax MP-D4-40	[1] P27146.	40 A	4
RECmax MP-C4-50	[1] P27127.	50 A	4	RECmax MP-D4-50	[1] P27147.	50 A	4
RECmax MP-C4-63	[1] P27128.	63 A	4	RECmax MP-D4-63	[1] P27148.	63 A	4

Please contact us for more information about impulse input options

C/D curve circuit breakers with 6 kA cut off power (EN 60898). Please contact us for other specifications.

**MT-FDE, Motorized circuit breaker for currents exceeding than 63 A**

Type	Code	In (A)	Poles	weight (kg)
3 poles				
MT-FDE 80AIII	[1] P20D60.	80 A	3	2,90
MT-FDE 100AIII	[1] P20D61.	100 A	3	2,90
MT-FDE 125AIII	[1] P20D62.	125 A	3	2,90
MT-FDE 160AIII	[1] P20D63.	160 A	3	2,90
MT-FEE 250AIII	[1] P20E64.	250 A	3	3,80
4 poles				
MT-FDE 80A IV	[1] P20D70.	80 A	4	3,40
MT-FDE 100A IV	[1] P20D71.	100 A	4	2,38
MT-FDE 125A IV	[1] P20D72.	125 A	4	3,40
MT-FDE 160A IV	[1] P20D73.	160 A	4	3,40
MT-FEE 250A IV	[1] P20E74.	250 A	4	4,60

(*1) Not included in the reference

Delivery time: [*] immediate
[x] working weeks
[c] consult

**WRGU-10-MTT, Full earth leakage and circuit breaker reclosing and protection unit, panel**

Type	Code	In (A)	Poles
2 poles, C curve			
WRGU-10MTT-C-2-6A	[1] P21810.	6 A	2
WRGU-10MTT-C-2-10A	[1] P21811.	10 A	2
WRGU-10MTT-C-2-16A	[1] P21812.	16 A	2
WRGU-10MTT-C-2-20A	[1] P21813.	20 A	2
WRGU-10MTT-C-2-25A	[1] P21814.	25 A	2
WRGU-10MTT-C-2-32A	[1] P21815.	32 A	2
WRGU-10MTT-C-2-40A	[1] P21816.	40 A	2
WRGU-10MTT-C-2-50A	[1] P21817.	50 A	2
WRGU-10MTT-C-2-63A	[1] P21818.	63 A	2

Type	Code	In (A)	Poles
4 poles, C curve			
WRGU-10MTT-C-4-6A	[1] P21820.	6 A	4
WRGU-10MTT-C-4-10A	[1] P21821.	10 A	4
WRGU-10MTT-C-4-16A	[1] P21822.	16 A	4
WRGU-10MTT-C-4-20A	[1] P21823.	20 A	4
WRGU-10MTT-C-4-25A	[1] P21824.	25 A	4
WRGU-10MTT-C-4-32A	[1] P21825.	32 A	4
WRGU-10MTT-C-4-40A	[1] P21826.	40 A	4
WRGU-10MTT-C-4-50A	[1] P21827.	50 A	4
WRGU-10MTT-C-4-63A	[1] P21828.	63 A	4

Certified and Approved by Telefónica

Earth leakage relay with adjustable sensitivity (0.03 A, up to 0.5 A), adjustable delay (with curve, INS/SEL, or by time, from 0.1 to 1 s) and automatic reclosing system, 15 attempts by default (earth leakage) and 2 by the circuit breaker

OVERCURRENT SELF-RECLOSE**Self-reclosing circuit breaker****RECmaxP, Motorized circuit breakers, up to 63 A**

Type	Code	In (A)	Poles
2 Poles, C Curve			
RECmax P-C2-6	[1] P28110.	6 A	2
RECmax P-C2-10	[1] P28111.	10 A	2
RECmax P-C2-16	[1] P28112.	16 A	2
RECmax P-C2-20	[1] P28113.	20 A	2
RECmax P-C2-25	[1] P28114.	25 A	2
RECmax P-C2-32	[1] P28115.	32 A	2
RECmax P-C2-40	[1] P28116.	40 A	2
RECmax P-C2-50	[1] P28117.	50 A	2
RECmax P-C2-63	[1] P28118.	63 A	2
4 Poles, C Curve			
RECmax P-C4-6	[1] P28120.	6 A	4
RECmax P-C4-10	[1] P28121.	10 A	4
RECmax P-C4-16	[1] P28122.	16 A	4
RECmax P-C4-20	[1] P28123.	20 A	4
RECmax P-C4-25	[1] P28124.	25 A	4
RECmax P-C4-32	[1] P28125.	32 A	4
RECmax P-C4-40	[1] P28126.	40 A	4
RECmax P-C4-50	[1] P28127.	50 A	4
RECmax P-C4-63	[1] P28128.	63 A	4

Type	Code	In (A)	Poles
2 Poles, D Curve			
RECmax P-D2-6	[1] P28130.	6 A	2
RECmax P-D2-10	[1] P28131.	10 A	2
RECmax P-D2-16	[1] P28132.	16 A	2
RECmax P-D2-20	[1] P28133.	20 A	2
RECmax P-D2-25	[1] P28134.	25 A	2
RECmax P-D2-32	[1] P28135.	32 A	2
RECmax P-D2-40	[1] P28136.	40 A	2
RECmax P-D2-50	[1] P28137.	50 A	2
RECmax P-D2-63	[1] P28138.	63 A	2
4 Poles, D Curve			
RECmax P-D4-6	[1] P28140.	6 A	4
RECmax P-D4-10	[1] P28141.	10 A	4
RECmax P-D4-16	[1] P28142.	16 A	4
RECmax P-D4-20	[1] P28143.	20 A	4
RECmax P-D4-25	[1] P28144.	25 A	4
RECmax P-D4-32	[1] P28145.	32 A	4
RECmax P-D4-40	[1] P28146.	40 A	4
RECmax P-D4-50	[1] P28147.	50 A	4
RECmax P-D4-63	[1] P28148.	63 A	4

Please contact us for more information about impulse input options

C/D curve circuit breakers with 6 kA cut off power (EN 60898). Please contact us for other specifications.

Programmable reclosing relay + motorized switch

Complete set formed by: RRM + MT-E62/E64 (*1)

**RRM, Overcurrent tripping relay with self-reclosing system**

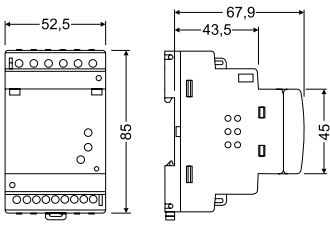
Type	Code	Communications	Nr. reclosures	Time between reclosures
RRM-P	[*] P25130.	-	Adjustable: 0,1,2,4,6,8	0.5,1,2,3,4,5 min
RRM-C	[*] P25131.	RS-485	Adjustable: 0,1,2,4,6,8	0.5,1,2,3,4,5 min

To operate with motorized circuit breaker. Please contact us for more information

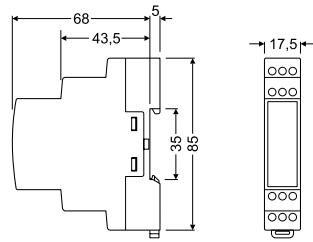
(*1) Not included in the reference

Dimensions

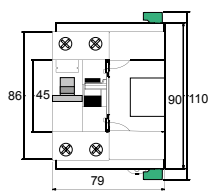
RGU-10 / CBS-4



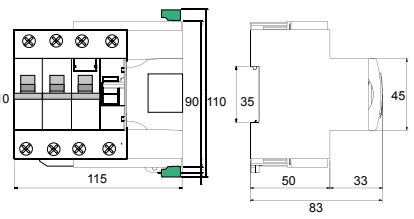
RRM



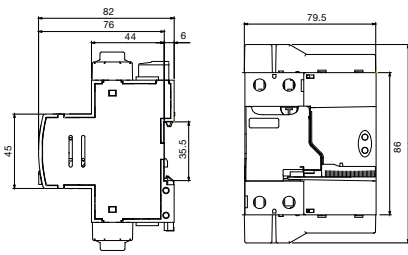
RECmax
2 poles



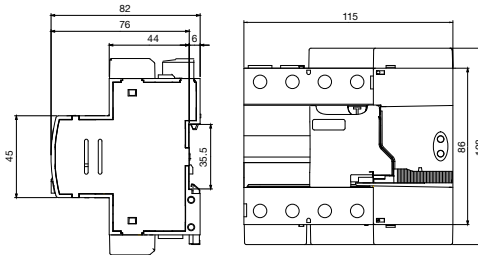
4 poles



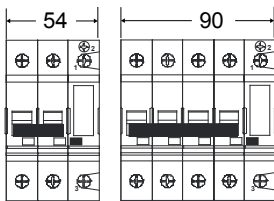
REC3 2P / REC3C 2P



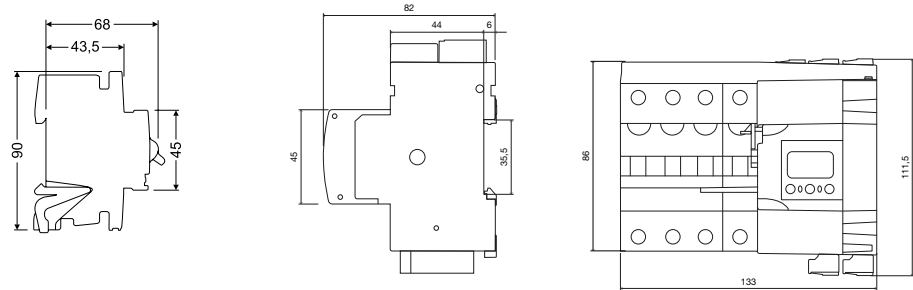
REC3 4P / REC3C 4P



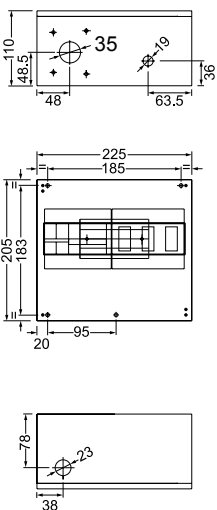
MCB.P



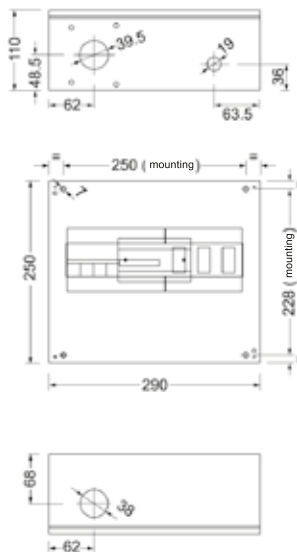
RECmax CVM



WRGU-10-MTT P2



WRGU-10-MTT P4



WRU-10

